

Spacers for wall-mounted systems

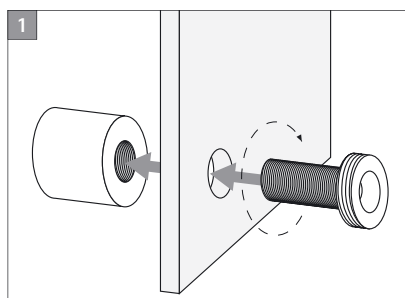
Moedel spacers open up a multitude of design options. With four different sizes available it is possible to adapt to material thicknesses ranging from 1 to 16 mm and spaces to the wall of 6 to 18 mm. For high quality requirements, two surface finishes are available – chrome-plated and gold finish. To ensure that they are long lasting the high quality base material is brass.



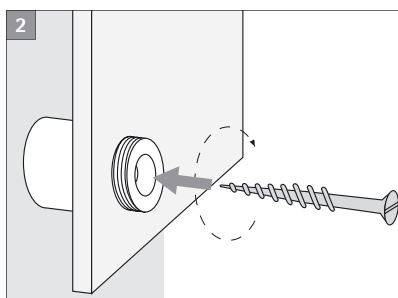
for material thickness	Diameter	Space to wall	Hole size	Art. No. silver/chrome	Art. No. gold			
1 to 5 mm	10 mm	6 mm	7 mm	i 7351s *	i 7351g *			
2 to 5 mm	14 mm	6 mm	9 mm	i 7352s *	i 7352g *			
2 to 10 mm	18 mm	12 mm	11 mm	i 7353s *	i 7353g *			
4 to 16 mm	24 mm	18 mm	13 mm	i 7354s	i 7354g			

* Spacers are only available in unit packs of 10 items. Sold only in sealed unit packs.

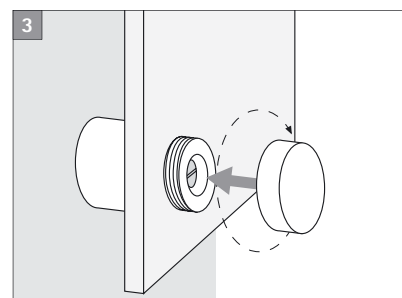
Installation



The material is clamped between the screw bushing and the screw-in bolt by screwing these two parts together.



The sign is then installed by screwing* the bolt directly to the wall.



The screw is then covered by a cap.

* Assembly material for wall mounting (screws and dowels) not included in delivery.