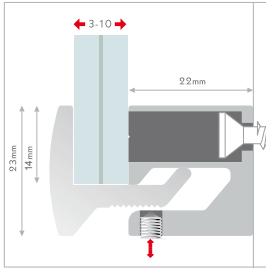
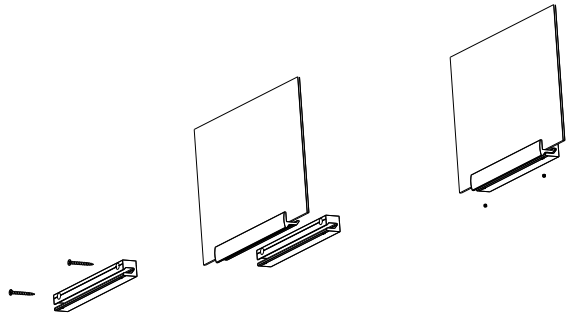


# clamper

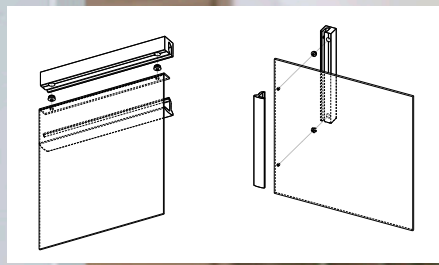


**EN** elegant clamp system, no holes. wall mount one profile, hook in the second, put on the panel and fix with allen screws. panels of different thicknesses are safely fastened without holes. you can use clamper in different lengths, on one or two sides, as sandwich system or with single panels. we provide you also with tempered glass panels in the most common sizes. mounting: variable clampsystem, tamper-proof. material: silver anodized aluminium.

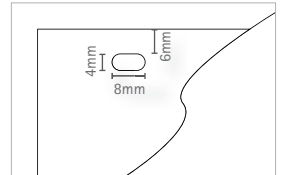
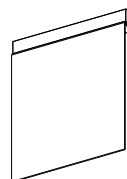
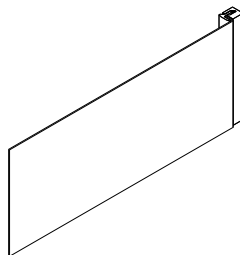


n° articolo | artikelnr. | product nr.

<input type="checkbox"/>	<b>FCL60</b>	60mm, 1pc
<input type="checkbox"/>	<b>FCL100</b>	100mm, 1pc
<input type="checkbox"/>	<b>FCL200</b>	200mm, 1pc
<input type="checkbox"/>	<b>FCL300</b>	300mm, 1pc
<input type="checkbox"/>	<b>FCL400</b>	400mm, 1pc
<input type="checkbox"/>	<b>FCL600</b>	600mm, 1pc
<input type="checkbox"/>	<b>FCL900</b>	900mm, 1pc
<input type="checkbox"/>	<b>FCL2000</b>	2000mm, 1pc



**EN** for the upright mounting of single panels you can simply insert the clammer support into the holes. clammer support even turns your clammer with shaped panels into a flag or ceiling sign support. material: aluminium.



la distanza dei fori nel fisso clammer può variare, quindi prima di forare il pannello si prega di prendere le misure direttamente con il fisso clammer utilizzato.

abstände der bohrungen bei fisso clammer, können variieren, daher masse für panelbohrung direkt bei den verwendeten fisso clammer abnehmen.

the distance of the holes on fisso clammer can vary, therefore check the distance for panel holes directly with the fisso clammer used.

n° articolo | artikelnr. | product nr.

FCL02AL

clammer support, 2pcs